

Customer :

customer

Customer part :

customer part

Comment :

Comment

S1=4.74

S2=4.93

Tmax=454

Tp S2=493.0

PI=0.49

HI=94

Sample =1744.80

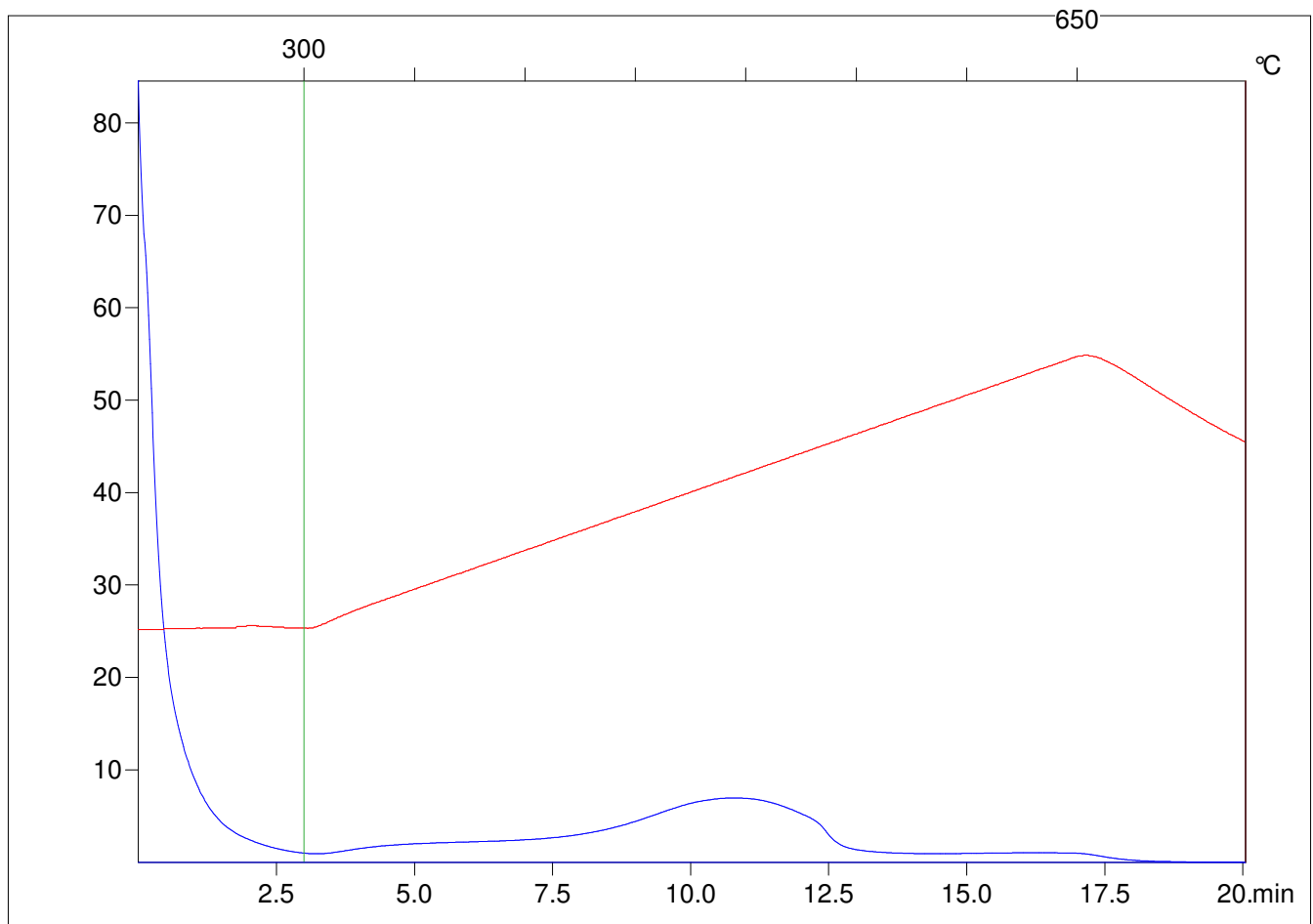
Method =Bulk Rock

Cycle=Basic

KFID(10*9)=1444

Qty =70.4

TOC=5.23



C:\VINC\PK2_1792\PK083.R00 : FID pyrolysis graphic

State

Pyro Status

Oxi Status